

The background consists of several diagonal stripes in various shades of blue, ranging from a light sky blue to a deep navy blue. The stripes are parallel and run from the top-left towards the bottom-right.

ALL ABOUT YOU

Living @ Conn

The Basics

- Most residential houses have a mix of first-year students and upperclass students.
- First-year students usually live in doubles, triples or quads.
- Sophomores live in doubles or singles; juniors and seniors typically have singles.
- Your room will come with an extra-long twin bed, dresser, closet space, desk, chair, and wired and wireless Internet connections.
- Landline room phones are an option if you want one. Contact the IT Service Desk.
- All residential houses are mixed gender, although some specific floors are single gender. All residential bathrooms are gender-inclusive.
- Your Camel Card gets you into your house; you'll also have a key for your room.
- Your Camel Card can be used at the dining halls, Oasis, Jazzman's Café at Ruane's Den and laundry machines.



HINTS & TIPS:

Keep an eye on your email. This summer, you will receive instructions on uploading your photo for your Camel Card.

Roommates

Your roommate may turn out to be a lifelong friend. Or not. Either way, setting some ground rules can help avoid conflicts. Here are some topics to discuss when you meet with your roommate and housefellow during Orientation:

- **Visitors:** When would you prefer not to have people in the room? Are the rules different for male and female visitors? How do you feel about having other people spend the night?
- **Sharing:** What is shared, and what is yours? Do you mind if your roommate eats your food? Uses your toothpaste? In the room, what is communal space?
- **Noise:** Do you study with music on? Do you like to watch TV late at night?
- **Cleanliness:** How often do you plan on cleaning the room? Do you mind if it's messy, or do you prefer it stays neat?



HINTS & TIPS:

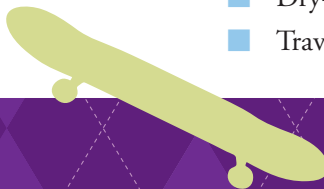
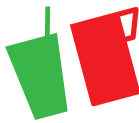
At the beginning of the semester you will fill out a roommate contract with your roommate(s). This is a great opportunity to set ground rules about what is OK and what isn't.



WHAT TO BRING

Connecticut College is committed to promoting and advancing sustainability on campus and in the surrounding communities. As you begin to purchase items to bring to campus, look for products made by companies that are committed to environmental stewardship and provide their employees with a safe working environment and livable wages.

- Your copy of **Over the Hump!**
- Bed linens (twin extra-long: 80" L x 36" W x 7" D)
- Mattress pad
- Pillow(s)
- Blankets, especially for picnics or lying on the green
- Towels and washcloths, including beach towel
- Shower slippers or flip-flops
- Personal toiletries with carrying caddy
- Alarm clock
- Wastebasket
- Clothes hangers
- Nice outfit/suit
- Birth certificate and Social Security card
- Computer with cables, Ethernet cable
- Power strip/surge protector
- Extension cord
- Low-wattage, fluorescent desk lamp or floor lamp
- Energy-efficient light bulbs (LED or CFL)
- Desk fan
- Laundry basket
- Detergent
- Backpack
- Posters
- Pushpins/nonstick adhesive squares for hanging posters
- Postage stamps, envelopes, etc.
- School supplies: pens, pencils, etc.
- Under-bed storage boxes
- Bicycle with durable lock
- Camera
- Sled
- Boots
- Umbrella
- Doorstop
- Dry-erase board
- Travel mug





Please leave at home

Hot plates/skillets
(e.g., George Foreman grills)
Hibachis and grills
Toaster ovens
Space heaters
Candles and incense
Flammable fluids

Air conditioners
Ceiling fans/lights
Halogen lamps
Outside TV antenna
or satellite dish
Pets
Wireless routers



TIPS

TVs, DVD/Blu-ray players and microwaves are all fine to bring with you to campus. You may wish to check with your roommate(s) first so you won't have two of everything. Purchase a power strip so you can plug them all in/turn them all off at once.

Since most residence hall rooms are not carpeted, you may want to purchase a room-size or area **rug**. Wait until you get to campus, as you can buy rugs locally, and you may wish to share the cost with your roommate(s).

We have a state-of-the-art communications network providing sophisticated phone, cable and data connectivity from every room on campus, with many wireless access points. The network enables you to access academic resources such as the automated library system, the courseware server, the CamelWeb intranet, email and the Web from your room. If you need to purchase a **computer**, Connecticut College has partnered with Dell, Apple and HP to offer excellent discounts on many models. Learn more on page 39.

It's convenient to have a small **refrigerator** (no larger than three cubic feet) in your room to keep drinks and snacks. Consider the environment and rent one; a rental service is available through the College. If you do want to purchase one, you may wish to wait until you arrive on campus and share the cost with your roommate(s). Look for Energy Star-rated appliances to help save energy.

The Connecticut College Bookshop also has many room furnishings you'll need, including official Connecticut College items.

One final tip: **pack less than you think you need!**



Who's Who in the Residence Houses

Fellow students hold leadership roles in the house. These students work for the Office of Residential Education and Living (REAL) and are trained to help you have a fantastic year. On any given night, a housefellow or floor governor is on call to assist with problems or to help if you get locked out of your room.

▪ Housefellow

- ▶ The top leadership position in the house, and a help with virtually any problem or issue.
- ▶ Responsibilities may include advising on academic, personal and social matters; enforcing house and campus policies; helping develop house programs; and mediating roommate conflicts or room problems.
- ▶ The housefellow has on-call responsibilities and the duty to intervene in order to protect the health and safety of the environment (policy enforcement).

▪ Floor Governor (FG)

- ▶ The floor governor creates and coordinates social and educational programming such as pizza party study breaks or dialogues with faculty and staff.
- ▶ The number of floor governors depends on the size of the house.
- ▶ The FG has on-call responsibilities and the duty to intervene in order to protect the health and safety of the environment (policy enforcement).

In addition to the student-staff positions, your house will have a number of representatives in elected positions who meet weekly as **House Council**. Many representatives are elected in the fall, so you can get involved. Any resident can attend House Council meetings.

▪ House Senator

- ▶ Each senator is elected by house residents in the fall to represent the house in the Student Government Association (SGA).
- ▶ The house senator attends weekly SGA meetings and voices the concerns of the house. He or she reports back to the house in a weekly email.

▪ Community Organizers for Sustainability Transformation (COST) Representative

- ▶ COST reps educate the campus community in adopting sustainable behaviors that advance environmental stewardship, social equity and economic well-being.

▪ Peer Educator (PEeps)

- ▶ PEeps educate fellow residents about health issues, including alcohol and other drug abuse, nutrition and eating disorders, sexual assault/misconduct, and stress and time management.



▪ Student Adviser (SA)

- ▶ Student advisers are selected and trained by the dean of studies and student life staff to help you adjust to the academic, personal and social challenges of college life. Often he or she becomes a valuable friend and resource.
- ▶ Your SA will guide you through Orientation and will assist you as you prepare to meet with your faculty adviser and register for courses.

Social Life in Your Residence

- Houses host activities such as study breaks, movies, pizza parties and brunches.
- You can organize parties and compete in Camelympics with fellow residents.
- Don't see activities you like? Talk to your housefellow or floor governor and help plan some!



Intellectual Life in Your Residence

Don't be surprised if you run into a professor in the common room! Learning doesn't end in the classroom. In fact, some of the most interesting discussions you'll have might take place in the common room or while hanging out in the hallway.

14



via @ConnColl_REAL

First-Year House Meetings are happening right now! It looks like we have an awesome group of new Camels! #finallyacamel



Residential Education Fellows (REF)

A group of faculty members called REFs helps create events and programs in the houses. Eleven full-time tenured faculty, in conjunction with FGs, plan a variety of social and academic programming in the residence halls. Sometimes these programs journey into the surrounding neighborhoods. You may make cupcakes at a bakery in New London or learn how to curl at an ice rink in Bridgeport.

Freshman Seminars in the Common Room

There's nothing like rolling out of bed, heading down a flight of stairs and getting to class in 30 seconds. Some of the Freshman Seminars take place right in your residence common room, meaning your roommates and hallmates might also be your classmates. It's a great way to get to know the people you live with, and often times Freshman Seminar professors will bring treats, invite the class over for dinner or form a particularly special bond with their class.

REAL Talk

Behind the scenes, the College's Residential Education and Living (REAL) staff works to promote learning, safety and fun in the residence halls. They're the professionals and are ready to help out if you need a hand. The office is located in Warnshuis, behind Shain Library. (F2)

@ConnColl_REAL | [fb.com/ConnCollREAL](https://www.facebook.com/ConnCollREAL)

Area Coordinators

Area coordinators are professional staff members from the REAL office who work closely with each house and are assigned to different geographic areas of campus: north, central and south. You can always get in touch with your area coordinator or the REAL staff by emailing housing@conncoll.edu.

Your New Address

Even with email and text messages, there's something nice about getting a package from home (or maybe it's just a package you ordered from Amazon!).

- Mail is delivered to the Post Office on the first floor of Cro. You keep your same mailbox the whole time you're at Connecticut College.
- Address letters and packages to Name, Campus Box #, Connecticut College, 270 Mohegan Ave., New London CT 06320-4196.
- Feel free to send mail or packages in the weeks before Arrival Day. Just add "Class of 2018" to the address.
- When you receive a package, you'll find a slip in your mailbox. Bring the signed slip and photo ID to the Post Office window to get the package.

15



HINTS & TIPS:

Your mailbox is available 24 hours a day, but the window is open only during weekday business hours. Keep this in mind, especially if you're expecting a box of home-baked cookies on a Friday afternoon!



Eating @ Conn

@CCdining | Insta: CCdining | fb.com/CCdiningservices



Meal Plan 101

- You'll need your Camel Card to swipe in to any dining hall at any meal.
- There are three meal periods Monday through Saturday (breakfast, lunch and dinner) and two on Sunday (brunch and dinner).
- **Unlimited access** to the dining hall means that if you need to leave for any reason, you can swipe back in during that same meal period.
- Full-plan students get \$45 on their Camel Cards each semester to use at the Oasis Snack Shop in Cro and Jazzman's Café at Ruane's Den. Reduced plans receive a reduced amount.
- Full-plan students get two free guest meals per semester. Additional guest meals may be charged to your student account by filling out a charge slip at the dining hall.
- Card run out of money? It can be refilled at the Camel Card office in Cro (G2).

Where to have a meal

The main dining hall: Harris Refectory

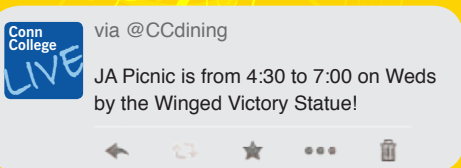
Harris is the College's main dining hall. It's the largest, located in the Plex. (It's connected to Morrison, Lambdin, Hamilton, Wright, Park and Johnson, so if you live in those residence halls, you won't have to even set foot outside in the winter to go to and from meals!) Harris is the only dining hall open on weekends.

16

Smaller, homier options

Jane Addams (D2), Freeman (D2) and Smith (G3) all have smaller dining halls within their residence halls. They are, of course, open to any student. Freeman is the vegetarian dining hall and serves vegan meals, too. These dining halls have more limited hours than Harris does.

- ★ The Language Tables, a staple of Connecticut College, will move to the 1973 Room, part of Harris, for 2014-2015, a by-product of the Shain Library renovation. Usually located in Knowlton, these tables will continue to allow international and language-studying students the opportunity to converse in their language of choice over lunch each day.



Where to have a snack or hang out

Oasis

Oasis is the main snack shop, located in Cro. It serves sushi, ice cream, popcorn chicken, mozzarella sticks, salads and more. Oasis is open until 1 a.m. daily and until 2 a.m. on Saturday nights.

Coffee houses galore!

There's no shortage of coffee on campus. In addition to the dining halls and Oasis, you can pick up some gourmet coffee at:

★ The Blue Camel Café

Usually located in Shain Library, the Blue Camel will live in the Blaustein Faculty Lounge during the library's renovation. After construction is complete, it will move to the main floor and serve as a 24-hour study space!

@BlueCamelCafe

Coffee Grounds

Located in Katharine Blunt (KB) House, Coffee Grounds is student-run and serves coffee, tea and fresh baked goods.

@Coffee_Groundz

Jazzman's Cafe at Ruane's Den

Ruane's Den holds Jazzman's Cafe and features coffee, snacks, salads, panini and smoothies. Ruane's Den is in Harkness House, overlooking Tempel Green.

fb.com/JazzmansCTCollege

The Coffee Closet

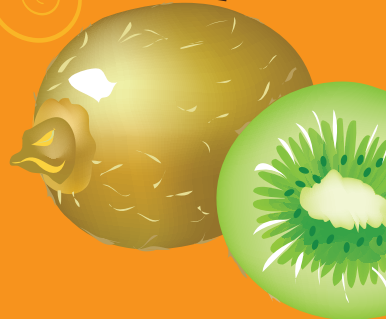
The Coffee Closet began as an SGA/student partnership and is one of the most popular spots on campus. It's located in Cummings Arts Center and has late hours, making it a popular spot for students who are working on art and music projects late at night.

Insta: the_coffee_closet



*** DINING TIPS FROM THE PROS ***

- Be creative! Don't like the dessert du jour? Make yourself a root beer float, milkshake or s'mores.
- There are lots of dining options, including vegetarian, vegan and gluten-free meals.
- For something simple, Harris serves grilled chicken breast daily.
- If you need a change of pace, Oasis has great breakfast sandwiches and local merchants often set up shop to sell luch in Cro.
- Harris has a local/regional salad bar that serves foods from around the area.
- You can order eggs anytime in Harris from the grill, and you can even bring veggies, meats and cheese from the salad bar to put in your omelets.
- Try out the smaller dining halls in Smith, JA and Freeman.
- Keep an eye out for specialty food nights in Harris, which feature a taco bar, stir-fry to order and quesadillas.
- Freeman has a soup, salad and bread bar at lunch on Tuesday and Thursday.
- About twice a semester, Freeman and JA host international dinners featuring menus from a specific culture or country.
- Moonlight Breakfast is a late-night full breakfast offered in Harris during fall exam time.
- Make friends with the dining hall staff. They're all very friendly and will help you out if you're running late.
- Have an allergy? Let Dining Services know and they'll work with you. Contact Kristine Serwinski at kwes@conncoll.edu for special accommodations.
- Shabbat is served in Zachs Hillel House on Fridays.
- With your meal plan, you can eat in the dining hall as many times as you want in a day.
- If you really like something (or really don't), you can tell the dining hall staff by writing a "napkin note" and leaving it on any of the dining halls' bulletin boards.



Getting Involved @ Conn

It's easy to get involved on campus, but it's even easier to find out what's going on! Just follow @ConnCollegeLive on Twitter and you'll see daily menus, events, announcements and more. If you run a club or are hosting an event, just mention @ConnCollegeLive in your tweet and we'll broadcast the word to the campus. Most clubs, organizations and teams are active on Twitter, so @ConnCollegeLive is a great place to find out whom you should follow.

Got a question? We probably have an answer. Just tweet @ConnCollegeLive and we'll do our best to help you. Maybe something's not working right, or you don't know where an event is taking place. We can help!

Join a club

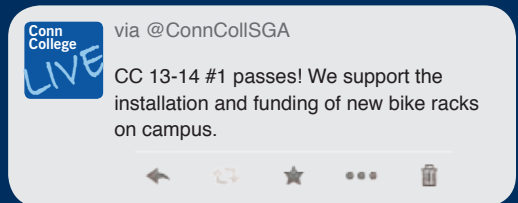
There are tons of student organizations on campus, and at the beginning of each year, each group sets up a table at the Student Involvement Fair to share what they do and recruit new members. Want to start something new? Just contact the Office of Student Engagement and Leadership Education (SELE) to learn the steps.

Make change happen: shared governance

The Honor Code entrusts students to take ownership of their academics and their campus. Through this shared governance, students have real influence on how the College runs.

Student Government Association (SGA)

- SGA's Assembly is divided into four branches: Executive Board, Chairs Council, House Senators and Class Presidents.
- Your Class Council consists of a class president, vice president, chief of communications, Student Activities Council (SAC) representative and Honor Council representatives.
- SGA is a great way to voice your concerns or opinions and make policy changes to help benefit the College. Any student can attend SGA's weekly meeting, which takes place on Thursday at 7:15 p.m.
- Members of the Executive Board and Chairs Council host office hours when you can meet them individually and ask questions.
- Executive Board, Chairs Council and Class Council elections take place in the spring for the following year. Elections for house senators and Class Council for the Class of 2018 will take place in the fall, once you arrive.



ORGANIZATIONS ACTIVE IN 2014-2015

- 1 in 4 @CConeinfour
- Active Minds
- Amnesty International
- ATLAS (international student organization)
- Belly Dance Club
- Best Buddies
- Cadenza (literary magazine)
- Cakes for Care
- CC Dems @ConnCollDems
- CCASA (Asian/Asian-American Student Association)
- Co Co Beaux @CoCoBeaux
- ConnChords @ConnChords
- CQ2 (CC Queer & Questioning)
- Dance Club
- Dance Team @CCdanceteam
- Eclipse
- EMS Club
- Energy Conservation Organization
- French Club
- Gaming Club @CCGamingClub
- Gospel Choir
- Habitat for Humanity @ConnCollHab
- Her Campus @HerCampusConn
- Hillel @CamelHillel
- Intersarsity Christian Fellowship
- Korean Language Club
- La Unidad
- Martial Arts Club
- Math Club
- MEChA (Movimiento Estudiantil Chicano de Aztlan)
- MOBROC
- N2O (short-form improv)
- Oceana @ConnCollOceana
- Outdoors Club
- PEeps (Peer Educators Empowering Positive Self) @ConnCollPeeps
- Peggotty Investment Club
- Pre-Health Club
- Pre-Med Paramedic Internship Program
- QPOC+ (Queer People of Color and Allies)
- RefleXion (spoken word) @RefleXion_co
- Relay for Life @CCrelay
- Scuds (long-form improv)
- Shwiffs @CCshwiffs
- Slavery Ends Today @SETconncoll
- Slavic Club
- Society Organized Against Racism
- Souled Out @SouledOutConn
- Spectrum (gender and sexuality alliance) @CC_Spectrum
- Spokespeople
- Sprout! (gardening club)
- TEDxConnecticutCollege @TEDxConnCollege
- The ConnArtists @TheConnArtists
- The Voice @TheCollegeVoice
- theLOOK (fashion magazine) @TheLookMagCC
- Umoja (Black Student Union) @UmojaConnColl
- Underexposed (photography magazine)
- Vagina Monologues @CC_vagmons
- Vox Cameli
- WCNI @WCNIradio
- Wig and Candle @WigAndCandle
- Williams Street Mix @WilliamsTweetMx
- Yalla Bina (Arabic Club)

20

Student Activities Council (SAC)

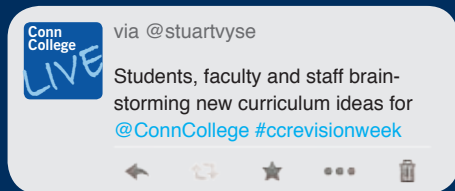
- The council organizes social and cultural activities.
- It promotes awareness of various issues on campus.
- Freshmen representatives will be elected in the fall and will serve as members of both their Class Council and SAC.
- SAC provides co-sponsorship and will help individual clubs fund and promote their events.
- SAC works closely with the Office of Student Engagement and Leadership Education (SELE) and produces some of Connecticut College's long-standing student traditions (see page 22).

Honor Council

- The Honor Council is charged with upholding Honor Code and managing infractions. The Honor Code entrusts students with a policy of self-government, which include unproctored, self-scheduled exams.
- Breaches of the academic, social or residential aspects of the Honor Code will result in a hearing before the Honor Council or a member of the student life staff.
- The Honor Council conducts the matriculation of your class with the associate dean of student life.
- You'll matriculate by signing the Honor Code and pledging to abide by it.
- Each class elects Honor Council representatives to serve on the committee.

College Committees

Students and SGA members are encouraged to serve on decision-making committees alongside faculty, staff and senior administrators. Sometimes these committees even report to the president or the Board of Trustees. Committees include but are not limited to the Environmental Model Committee, Facilities and Land Management, Student-Designed Majors/Minors Committee, Campus Safety Committee, Dining Services Committee, Educational Planning Committee, and the Priorities, Planning and Budget Committee.

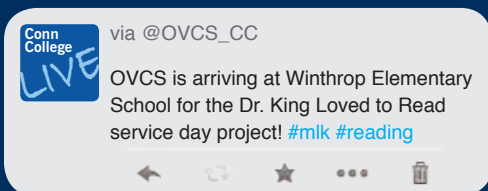


Volunteer

The Office of Volunteers for Community Service (OVCS) guides student engagement in community learning internships, volunteer positions and local activism.

- OVCS and its partner agencies and institutions in New London hold a community fair on campus each semester to help students learn about opportunities within mentor and tutorial programs, human service agencies, museums and health care institutions.
- About 600 students get involved with OVCS each year and provide transportation to volunteer sites.
- OVCS implements a wide range of community-focused job opportunities in New London and on campus for work-study students.
- OVCS also organizes mentorship programs that bring local students to campus.

@OVCS_CC | fb.com/OVCSConnColl



Save the date

You won't want to miss these Connecticut College traditions:

- Camelympics
- Fall Weekend and Harvestfest
- ArboFest
- Festivus
- Moonlight Breakfast
- Winter Formal
- Changing of the Guard
- Floralia



Different kinds of events

There's a lot to do on campus, and there are a lot of organizations throwing parties or hosting performances or lectures each week.

Student Engagement and Leadership Education (SELE) events

S2D (Something to Do) activities. These events are usually on Thursday nights and include Camel Bingo, game shows, live music, comedians, film screenings and more.

22

Get Out! trips to local and regional destinations. Recent trips have included visits to an alpaca farm and a trampoline center, glow-in-the-dark bowling, live theater performances, and local restaurant trips.

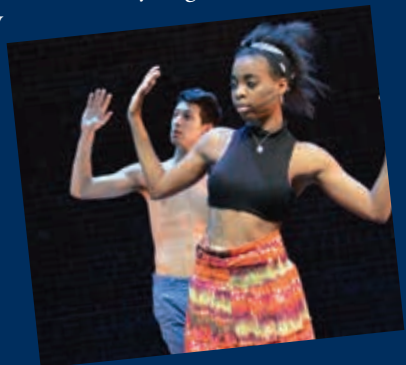
Hump Day activities provide a midweek break and feature on-campus activities including tie-dye, henna tattoos and pumpkin carving, to name a few.

[@CCSELE](#) | [Insta: CCSELE](#) | [fb.com/CCSELE](#)

Student Activities Council (SAC) events

SAC is a student-run organization that puts on events and productions on campus. Learn more about SAC in the Shared Governance section, page 19.

SAC hosts performances; trips to Boston, Providence, Newport and New York City; apple picking; galas and dances on campus; and more. Each year, the activities and leadership change. SAC's year culminates with Floralia, the daylong music festival held annually on the first Saturday in May.



Cultural events

- Student organizations such as ATLAS, Umoja, CCASA, Spectrum, La Unidad, MEChA and Yalla Bina hold events celebrating diversity and promoting awareness.
- All music department performances are free for students. Just bring your Camel Card.
- Annual events include Black History Month, Latino Heritage Month, Asian-Pacific Islander Month, Native American History Month, Fusion, Drag Ball and Eclipse.
- Eclipse and Fusion are annual performances that are events that capture the diversity of Connecticut College through lively dance pieces. All students and alumni are invited.

Academic events

- Departments sponsor popular lecture series to stimulate intellectual discourse.
- Pizza and Profundity, sponsored by the philosophy department, allows students to engage in philosophical discourse over a slice of pizza.
- Dessert and Dialogues take place in common rooms and are discussions between faculty and students on a topic of your choosing.

Simply hang out

There are a million places to hang out with friends, read, do homework or sunbathe on campus. In addition to the coffeehouses listed on page 17, you might chose to spend some time in one of these spots.

The Arboretum

- All 750 acres of campus are managed as an arboretum. It includes the 445 acres of natural area maintained by the Botany Department. The Caroline Black Garden, next to Vinal Cottage (E4) is one of the nationally-recognized sections of the arboretum.
- An outdoor amphitheater provides rehearsal and performance space.
- Buck Lodge is used for gatherings and meetings by campus groups and visitors.
- It's a beautiful place to walk, hike, study, picnic or just sit and think.
- It's open every day until sunset. Maps and information are available at the Arboretum office on the first floor of Olin (E3).

@CCArboretum | fb.com/ConnecticutCollegeArboretum

Lambdin Game Room

- Play table games including foosball, table tennis, air hockey and pool.
- The room also has board games, a poker table, puzzles, wall-mounted televisions, an in-house sound system, and comfy couches and chairs.



LGBTQ Resource Center

- The center serves as a resource for the entire College community to learn about issues related to gender identity and sexuality.
- It provides a guide for students to identify faculty with expertise in LGBTQ and/or gender and sexuality studies.
- Organizations on campus are invited to reserve space in the center for meetings and events.
- It is a comfortable place for students to study, watch movies, talk and relax.

@CC_LGBTQcenter | fb.com/CCLGBTQ

Office of Sustainability at Steel House

- Students, staff and faculty develop and implement projects that help the College balance the three components of sustainability: social equity, economic well-being and environmental stewardship.
- It features comfortable seating, a kitchenette equipped for cooking and baking, a resource library, a fireplace, and outdoor patios.
- Open to all as a work, study or leisure space.

@CCsustainable | Insta: CCsustainable

International Student Center

- The center is located in the basement of Harkness Chapel.
- It features a small kitchen, meeting space and resources for international students.

Unity House

- The College's multicultural center also houses the office that advises organizations supporting underrepresented students.
- It contains a resource library, kitchen and multipurpose room that students, staff and faculty can reserve.
- The multipurpose room is a great place to relax and watch TV as well as to hold meetings, banquets and discussions.

@ConnUnity | fb.com/CCUnityHouse

Zachs Hillel House

- Opened in January 2014, the Hillel House serves as home base for the College's Hillel student organization.
- It features a kosher kitchen; a great room for studying, lectures and dinners; a library; conference room; and office space.
- Downstairs, comfy chairs and couches surround televisions, Ping-Pong tables and games.

The Women's Center (G3)

- The center can be found on the lower level of Smith-Burdick.
- It is run by students and provides a safe, welcoming environment for women and men to engage and discuss gender-related topics.
- Comfortable couches, a TV, books and resources on gender issues are available.

@CCWomensCenter | Insta: CCWomensCenter | fb.com/ConnecticutCollegeWomensCenter